



# Practical Task 3 – Creating an EPPI-Visualiser web database

**BAAL/CUP Research Synthesis in Applied Linguistics Seminar  
10 June 2021**

Dr Melissa Bond

[melissa.bond@ucl.ac.uk](mailto:melissa.bond@ucl.ac.uk)



@misc\_nerd



@EPPIReviewer



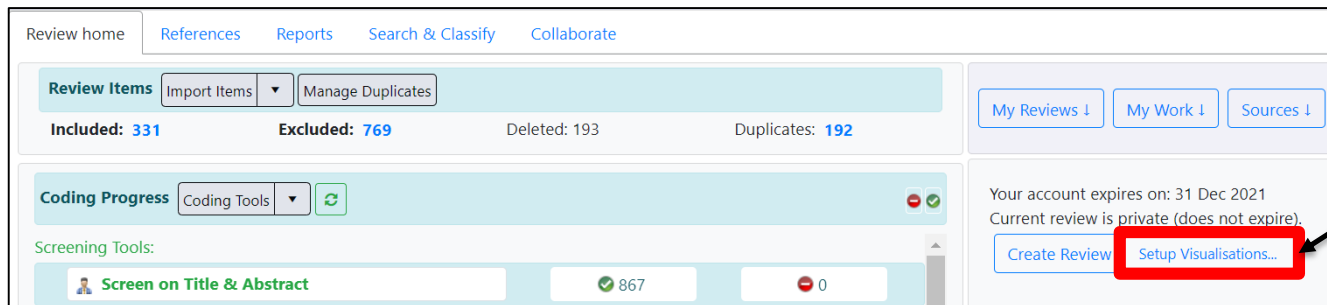
@EPPIReviewer4



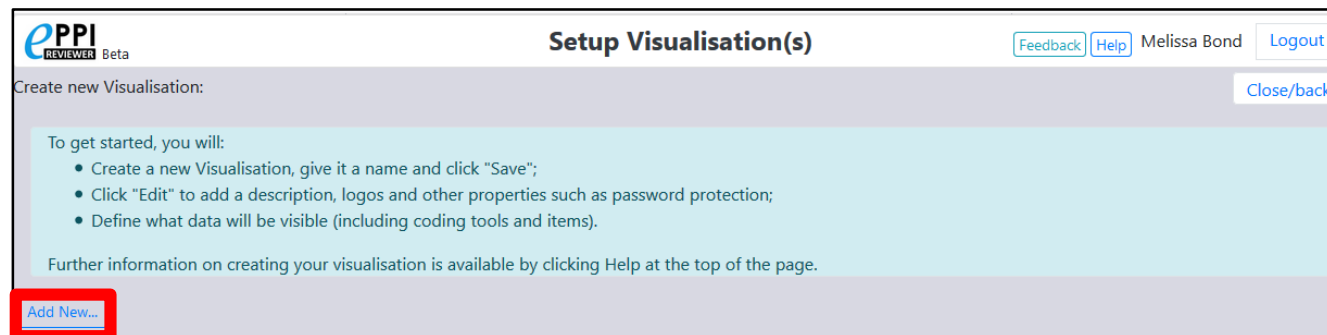
**Objective:** to create an openly accessible EPPI-Visualiser web database

**Task:**

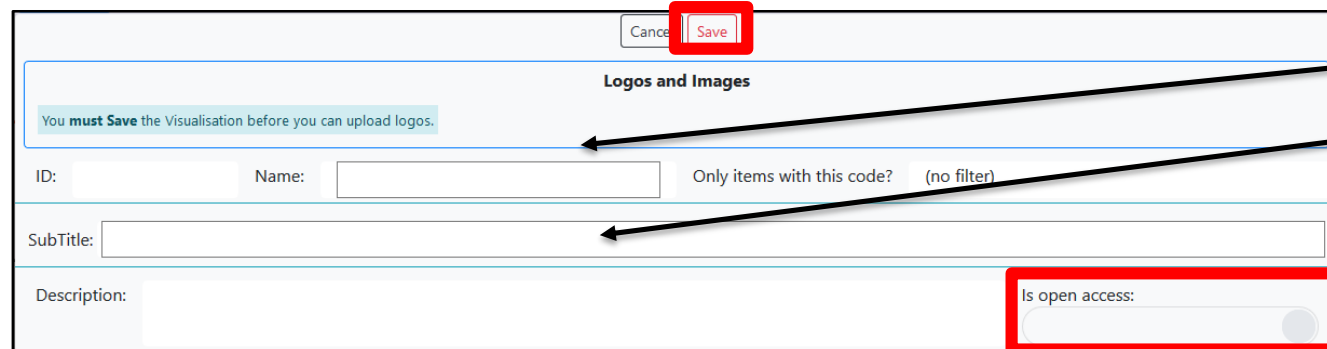
1. Within your review, create a web database of your coding using EPPI-Visualiser.



1. On the Review Home page, click on the blue 'Setup Visualisations' button.



2. Click on 'Add New...'



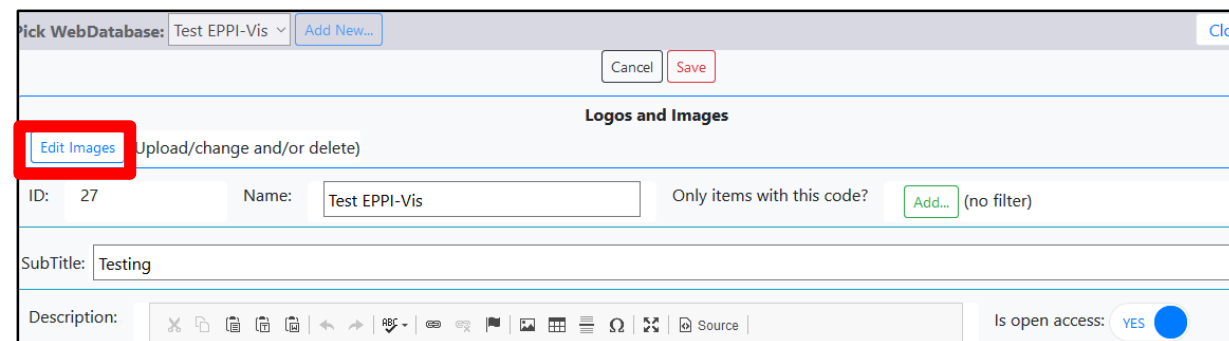
3. Type in a database name.

4. Type in a Subtitle (optional).

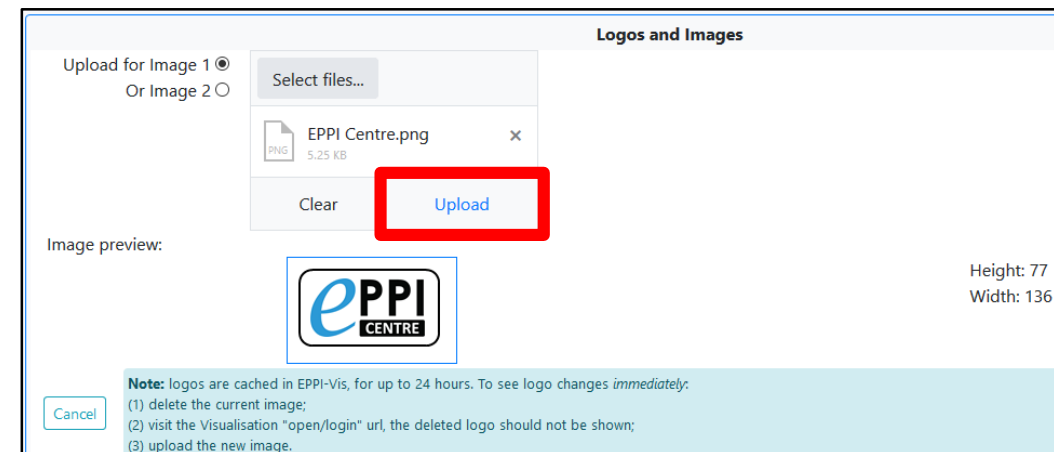
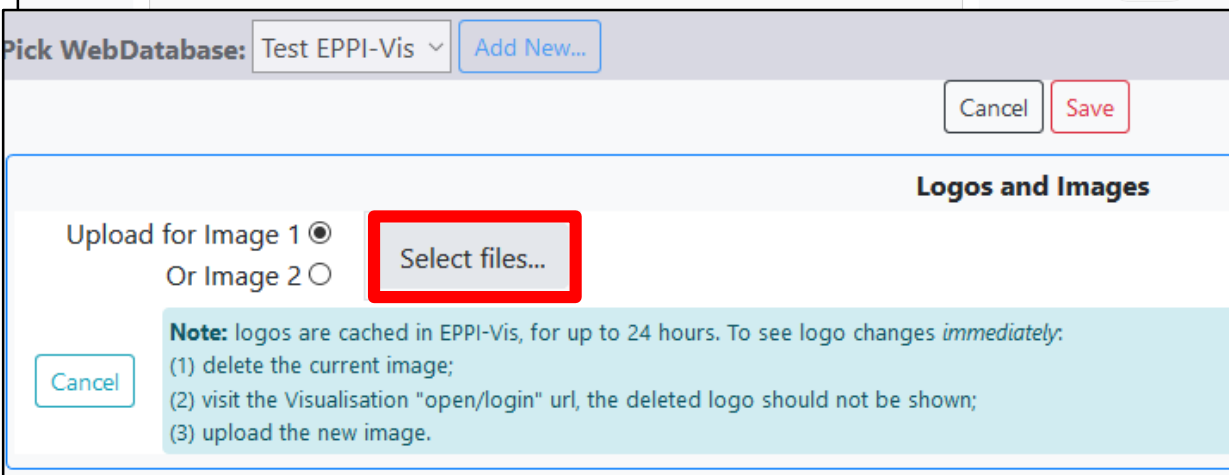
5. If you want to assign a password to it, click on the toggle under 'Is open access' and type in a password (This can also be done later).

6. Click 'Save'.

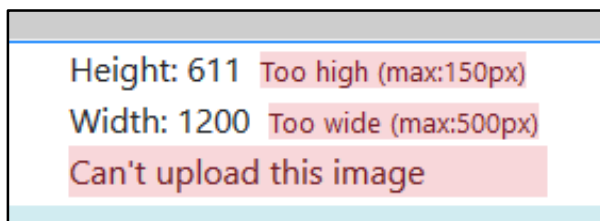
1. Click the green 'Edit!' button.
2. Type in a description – will appear in the 'Introduction' section.
3. If you only want to include studies that have a certain code, e.g. 'Include on Full Text', click on the green 'Add' button.
4. If you want to assign a password to it, click on the toggle next to 'Is open access' and type in a username and password.
5. Click save.



1. To upload images, click on 'Edit' and then the blue 'Edit Images' button.
2. Click on 'Select files...', choose the first image from your device.
3. Preview the image and click on 'Upload'.



4. If your image is too big, you will get a warning message.



5. To add another image, click on 'Edit Images' again and repeat the steps for Image 2.



# Creating an EPPI-Vis web database

**EPPI REVIEWER Beta** Setup Visualisation(s) [Feedback](#) [Help](#) Melissa Bond [Logout](#)

Pick WebDatabase: Test EPPI-Vis [Add New...](#) [Close/back](#)

## Test EPPI-Vis

Testing

[Edit!](#) [View in EPPI-Vis](#)

ID: 27 Name: Test EPPI-Vis Filter: INCLUDE on full text

Subtitle: Testing

Description: This is my web database. [Open Access](#)

Public URL: <https://eppi.ioe.ac.uk/eppi-vis/login/open?webdbid=27>

No Coding Tools...

Add Coding Tool: Please select... ▾

No Code is Selected

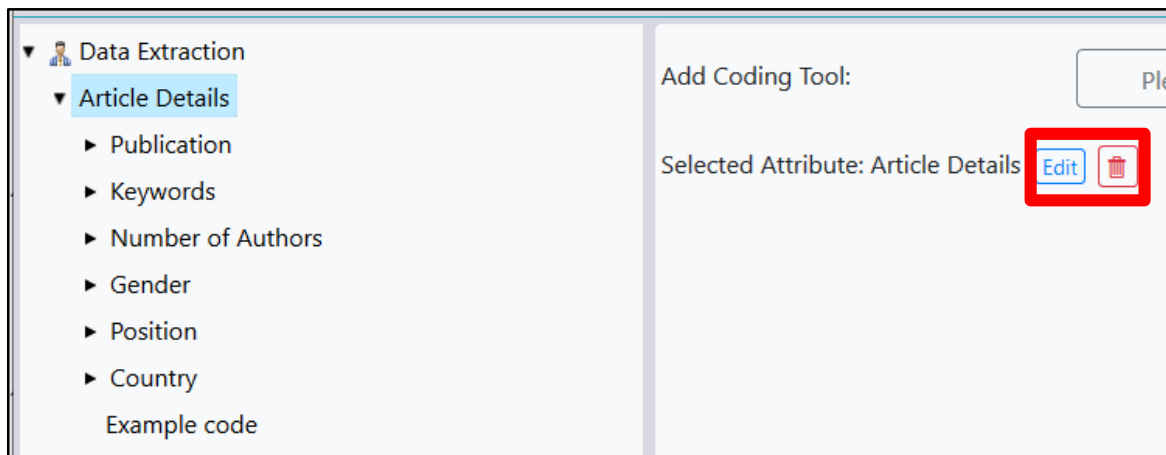
Add Coding Tool: Data Extraction ▾

Add This Tool: Data Extraction Add!

The database website address (URL) is now displayed.

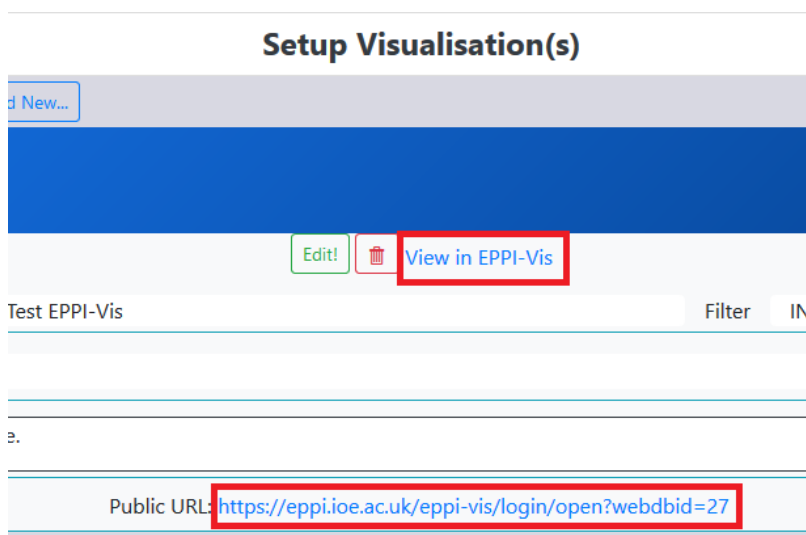
You can now choose which coding tools you would like to have displayed. To do this:

1. Click on 'Please select'.
2. Choose the coding tool and click 'Add!'.



You can also choose to have certain codes not appear in your database.

- This does not delete the codes from your review!
1. To remove a code completely, click on the red bin icon.
  2. To change the name of a code within your EPPI-Vis, click on 'Edit', change it and click on 'Save'.
    - Only changes how it appears in EPPI-Vis.



Now that your EPPI-Vis database has been setup, you can click on 'View in EPPI-Vis' or simply click on the blue URL link to see a preview.

Once you're happy with it, simply share the link.

# Further information

- [Schools and emergency remote education during the COVID-19 pandemic](#) – information and interactive evidence gap maps.
- [Schools and ERE during the COVID-19 pandemic](#) – article.
- [EPPI-Reviewer homepage](#) – sign up to a free one month trial.
- Recorded introductory [webinar](#) on using EPPI-Reviewer Web.
- [EPPI-Mapper information](#) – includes links to example maps.
- [EPPI-Mapper app](#)
- [EPPI-Reviewer instructional video](#) on interactive evidence gap maps.
- [EPPI-Reviewer instructional video](#) on how to create an EGM using EPPI-Mapper.
- Recorded [webinar](#) about creating interactive evidence gap maps.
- Information about [using Microsoft Academic Graph](#) within EPPI-Reviewer.
- [Mapping the field of emergency remote teaching in higher education due to COVID-19](#)



# Contact Information

## Dr Melissa Bond



Email: [melissa.bond@ucl.ac.uk](mailto:melissa.bond@ucl.ac.uk)

ER Support: [EPPISupport@ucl.ac.uk](mailto:EPPISupport@ucl.ac.uk)

Twitter: [https://twitter.com/misc\\_nerd](https://twitter.com/misc_nerd)

Website: <http://drmelissabond.weebly.com/>

ResearchGate: <https://www.researchgate.net/profile/Melissa-Bond-5>

LinkedIn: <https://www.linkedin.com/in/bondmelissa/>

YouTube: <https://www.youtube.com/user/EPPIReviewer4>